

A huge thank you to YOU - our families and children!
We could not do the work we do or publish our research findings without
your generous participation throughout the year.

NEWS YOU CAN USE



Where children teach adults.



Kids and Teens Online Activities

"Some of the best online learning games for kids" - Dr. Kathy Hirsh-Pasek is cited as a faculty expert in **The New York Times** (Aug 16).

American Psychological Association releases Recommendations on Teen Screen Time. Dr. Hirsh-Pasek contributed to this report on teen screen time as an expert. Learn a summary of the science with action steps regarding video viewing and adolescent well-being.



Remaking Tomorrow Podcasts

A podcast featuring the leading thinkers, practitioners, and experts navigating the future of learning.

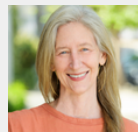
This past fall, Dr. Kathy Hirsh-Pasek joined Ryan Rydzewski and guest-hosted a series of **Remaking Tomorrow** podcasts.



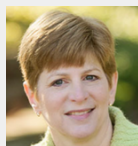
September 5: Dr. Hirsh-Pasek and Dr. **Roberta Golinkoff** talk about the promising signs shown by the science of learning.



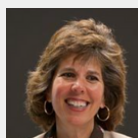
September 12: Dr. **Michael Rich**, pediatrician at Boston Children's Hospital, talks about leading healthy, digitally-integrated lives.



September 19: Dr. **Susan Magasmen**, director of the International Arts and Mind Lab, talks about the importance of artistic practice in maintaining wellness.



October 3: Dr. **Jodi Mindell**, associate director of the Sleep Center at CHOP, talks about the importance of sleep for children.



October 17: Dr. **Susan Neuman**, professor at NYU, talk about the importance of connecting young learners to books and early literacy skills.

Featured Projects



We are thrilled to announce that our GEO-OWL Pilot Camp in Summer 2024 was a success!

GEO-OWL Academy is a unique, weeklong day camp experience tailored for young explorers aged 11 to 14. This engaging, NSF-funded camp, led by **Dr. Nora Newcombe**, is designed to immerse children in geospatial exploration and spatial cognition - all at absolutely no cost to families. Campers engaged in nature data collection, virtual exploration, scavenger hunts, and Geographic Information Systems technology. See ways to get involved below!

Updates

Welcome to the lab!



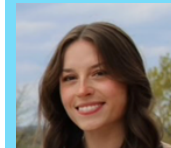
Dr. Natalie Evans - postdoctoral fellow. Natalie is a Postdoctoral Fellow at Temple University whose research explores children's curiosity, creativity, and playful learning. Fun fact: Natalie loves trying new recipes.



Jade Robinson - PhD student. Jade graduated from Johns Hopkins University with a B.S. in Neuroscience and a B.A. in Psychology. Jade is interested in play as a tool for social and emotional growth, playful learning, and parent-child interactions. Fun fact: Jade sang in a cappella group in college.



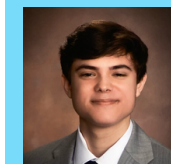
Lily Steele - post-baccalaureate staff member. Lily graduated from Boston College with a Bachelor of Arts degree in Applied Psychology and Human Development. She plans to work in education policy and research in her future. Fun fact: Lily has ran a marathon!



Olivia Biggs - post-baccalaureate staff member. Olivia graduated from Gettysburg College with a Bachelor of Arts degree in Psychology. She hopes to attend graduate school to get her PhD in Cognitive Neuroscience. Fun fact: Olivia is that she is ambidextrous!



Jordan Denaver - post-baccalaureate staff member. Jordan graduated from Haverford College with a Bachelor of Science degree in Psychology. She hopes to become a clinical psychologist. Fun fact: Jordan has gone skydiving!



Elijah Cyr - undergraduate researcher. Elijah is a Temple psychology major working with Dr. Elias Blinkoff on The 6Cs Go To College study. Fun fact: Elijah plays the guitar.



Active Playful Learning

Associate Director of the Active Playful Learning project, **Dr. Molly Scott**, talked about initial findings from our LEGO Foundation funded project at HolonIQ's 'Back to School Summit' in September 2024. The summit is the world's leading conference for global education executives, policymakers, philanthropists and investors.



Marvelous Moments Grant

Postdoctoral Fellow **Dr. Samantha Cohen** presented data from the Marvelous Moments grant at the Flux Society Congress in Baltimore, MD in late September. Marvelous Moments examines how children learn to remember and how this is supported by the developing brain. She presented a poster on "The Structure of Episodic Memory" that described how different measures of memory correspond with one another.

Congratulations!

Dr. Nora Newcombe is the 2025 recipient of the David E. Rumelhart Prize. This prize is awarded to an individual or team who has made a significant contemporary contribution to the theoretical foundations of human cognition. Dr. Newcombe's research has significantly advanced our knowledge of the development of spatial skills in children.

Dr. Kathy Hirsh-Pasek (and Dr. Roberta Golinkoff) received the ICIS Translational Research Award in July 2024. This award honors those who have taken what we know and use in the field for the betterment of infants and their families.

Findings from the Lab



Postdoc **Dr. Samantha Cohen** published a [PsyArXiv preprint](#) on data from the Marvelous Moments grant. The paper describes results from the first year of data collection in this longitudinal grant. Specifically, the paper details the development of the processes of pattern separation and pattern completion in children between four and seven years of age.



Throughout the past year, **Dr. Molly Scott** worked with The Learning Agenda, The William Penn Foundation, and multiple colleagues to think about how scientists and communities can create high-quality and sustainable Literacy Rich Environments. Check out [this brief](#) highlighting 5 insights on establishing and cultivating these spaces for all families.



Previous research assistant **Josh Litwin** published a [PsyArXiv preprint](#) on data from the Marvelous Moments grant. The paper analyses how specific cortical regions of the brain may correlate to the development of autobiographical memory from the ages of four to seven in children.



PhD student, **Katie Eulau**, published a paper in [Frontiers in Integrative Neuroscience](#). The review describes behavioral measures of dyadic social interaction quality, behavioral synchrony, and explores the possibilities of neural synchrony and the foundational role of a socially-gated brain for cognitive development.



Check out the latest publication to come out of **Playful Learning Landscapes!**

Results of this meta-analysis provide initial evidence that playful learning installations demonstrate large effects on caregiver behavior and caregiver-child interaction.

Opportunity #1 (Ages 11-14)



NSF GEO-OWL ACADEMY

**TITLE OF THE RESEARCH STUDY:
GEOSPATIAL EXPLORATION &
OUTDOOR WORLD LEARNING**

At the Temple University Research in Spatial Cognition Lab, we are interested in how kids learn about and navigate the world around them. Using virtual environments and real world navigation how kids move through new spaces and solve spatial problems.

- ✓ Explore native bird and bug species!
- ✓ Join scavenger hunts around Ambler!
- ✓ Solve real world environmental problems!
- ✓ Engage in Geographic Information Systems projects!

**JOIN US FOR A WEEKLONG ADVENTURE
AT TEMPLE AMBLER CAMPUS
Ages: 11-14**

FIND OUT MORE AND JOIN OUR EMAIL LIST USING THE QR CODE

This study is sponsored by the National Science Foundation (NSF). Attendance in the camp requires participation in the research study. The camp is offered at no cost. This information is approved by Temple University for public display and is associated with project #31505

RISCLAB@TEMPLE.EDU SITES.TEMPLE.EDU/RISC

Do you have a child between 18 and 30 months?

Temple University's Temple Infant and Child Lab and Developmental Science Lab are seeking participants for research on the brain bases of early social interaction.

The study will involve one visit to Temple's main campus lasting up to 2 hours.

Receive \$25 for your participation.

Interested?

Call, text, or email us.
215-839-6202
devlab@temple.edu



Or visit this link if you are interested in participating.



Opportunity #2 (Ages 18-30 months)



Our Directors



Kathy Hirsh-Pasek, Ph.D., a Professor of Psychology at Temple University, a senior fellow at the Brookings Institute and a Visiting Professor at Oxford University, was declared a “scientific entrepreneur” from the American Association of Psychology. Writing 17 books and 250+ publications, she served as President of the International Congress for Infant Studies, was on the Governing Board of the Society for Research in Child Development and is on the board of Zero to Three. Her Einstein Never Used Flashcards won the Book for a Better Life Award in 2003 with her *Becoming Brilliant* (2016) reaching the NYTimes Best Sellers List in education. Her newest book *Making Schools Work* (Nov. 2022) is the first education book co-written with teachers, administrators and scientists. It already sparked a national grant to re-imagine education. Hirsh-Pasek won awards from every psychological and educational society for her basic science and translational work designed to bridge basic science and educational impact. She also was honored with the Simms Mann Award and the Association of Children’s Museum Great Friend to Kids Award. She is a founding member of the Latin American School for Educational and Cognitive Neuroscience, she spearheaded a global network of scientists devoted to educational science. Co-founder of the global Learning Science Exchange Fellowship (LSX), she brings together scientists, journalists, policy makers and entertainers, to put learning science in the hands of educators. In 2021, she was elected as a member of the National Academy of Education. Her initiative *Playful Learning Landscapes* re-imagines cities and public squares as places with science infused designs that enhance academic and social opportunities. Her recent, initiative, *Active Playful Learning*, brings together leading scientists and educators to re-imagine early education in the US. Hirsh-Pasek frequently comments for the press (e.g. NPR, NYT) and blogs for the Brookings Institution.

Nora Newcombe, Ph.D., is a Laura H. Carnell Professor of Psychology at Temple University. Dr. Newcombe was educated at Antioch College, where she graduated with a major in psychology in 1972 and at Harvard University, where she received her Ph.D. in Psychology and Social Relations in 1976. She taught previously at Penn State University. Her research in cognition and cognitive development has centered on spatial cognition and on episodic memory, along with translational work on STEM education. She served as the PI of the NSF-funded Spatial Intelligence and Learning Center (SILC) from 2006-2018, headquartered at Temple and involving Northwestern, the University of Chicago and the University of Pennsylvania as primary partners. Dr. Newcombe currently serves as Past President of the International Mind Brain Education Society (IMBES), and as Editor of *Psychological Science in the Public Interest*, a journal of the Association for Psychological Science.

Honors include the Distinguished Scientific Contributions Award from the Society for Research in Child Development, the William James Fellow Award from APS, the Howard Crosby Warren Medal from the Society of Experimental Psychologists, the George Miller Award and the G. Stanley Hall Awards from APA, the Award for Distinguished Service to Psychological Science, also from APA. She has received three mentor awards, from Women in Cognitive Science, APA Division 7, and APS. She is a fellow of four divisions of the American Psychological Association (General, Experimental, Developmental, and Psychology of Women), of the Association for Psychological Science, and of the American Association for the Advancement of Science, and has been a Visiting Professor at the University of Pennsylvania, Princeton, the Wissenschaftskolleg in Berlin and the University of Otago. She is a member of the American Academy of Arts and Sciences and the Society of Experimental Psychologists.



Thank you to our sponsors: **The LEGO Foundation, William Penn Foundation, Vanguard Strong Start for Kids, NSF, The Bezos Foundation, Stan & Debra Lefkowitz, NIH**

Interested in participating in research?

Scan the QR code and fill out the form to receive more information!

